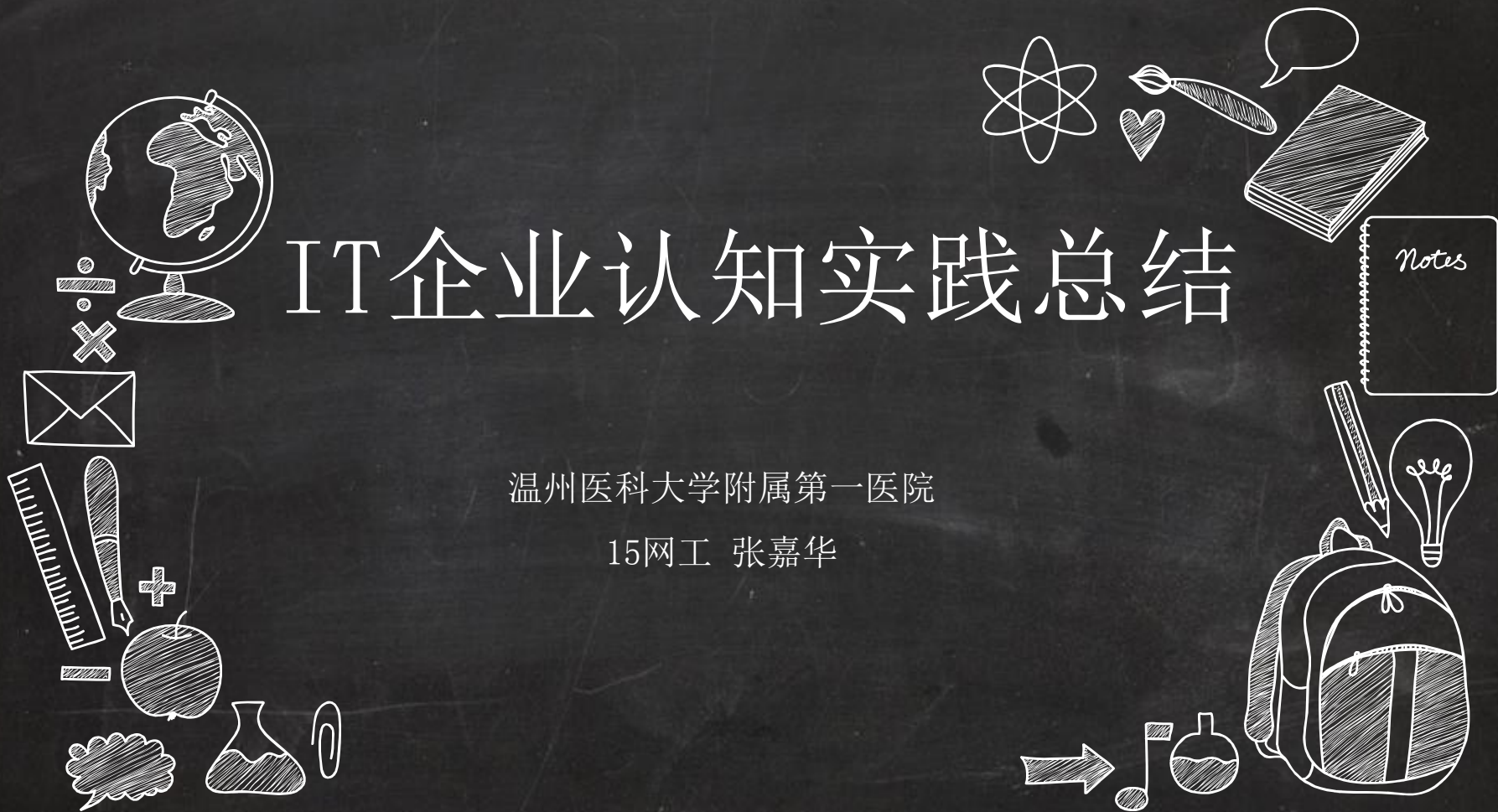


IT企业认知实践总结

温州医科大学附属第一医院

15网工 张嘉华





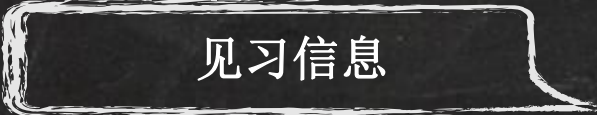
见习信息



见习收获

A large, stylized number '01' is centered in the upper half of the image. The '0' and '1' are rendered in a white, serif font. The number is surrounded by several white geometric shapes: a large inverted triangle with a double-line border, a smaller inverted triangle below it, and several smaller triangles pointing outwards. The background is a dark, textured grey.

01

A white, hand-drawn rectangular box with a slightly irregular, brush-stroke-like border is positioned at the bottom center of the page. Inside the box, the Chinese characters '见习信息' are written in a clean, white, sans-serif font.

见习信息



见习信息



见习单位

温州医科大学附属第
一医院



见习岗位

信息中心网络工程师

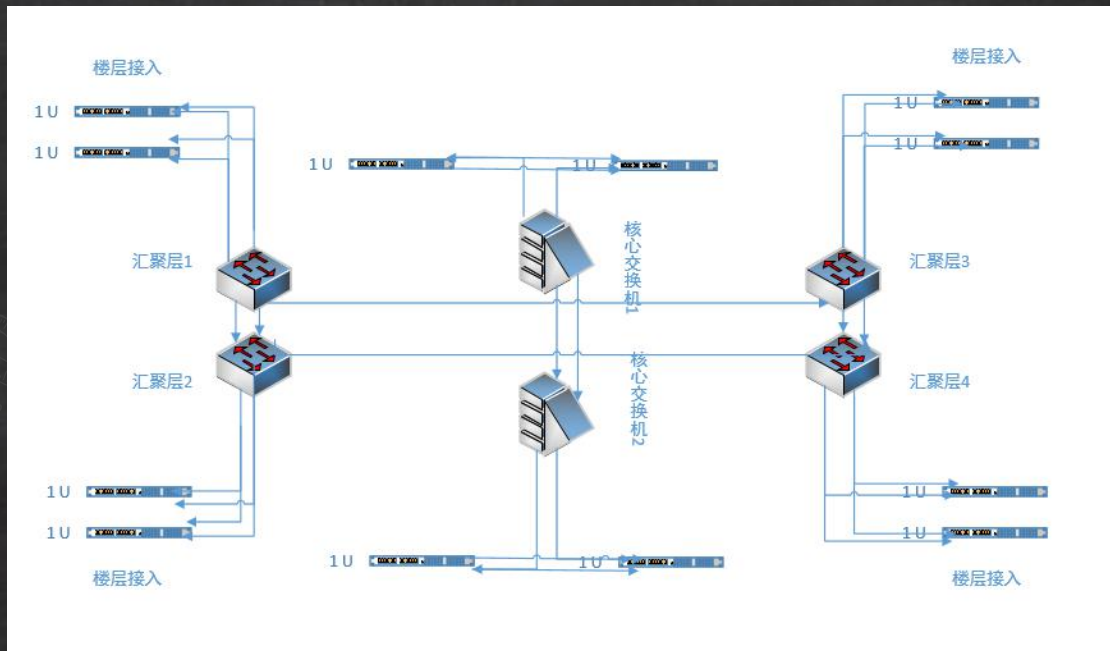


见习时间

7/10-7/28



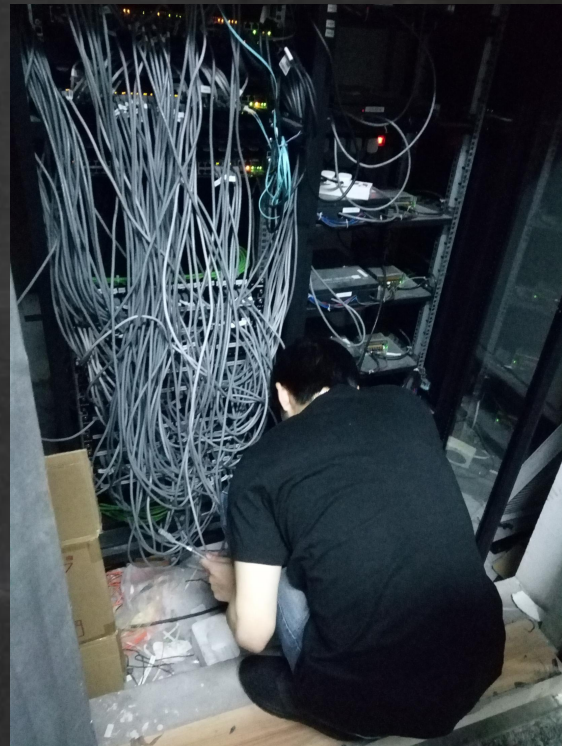
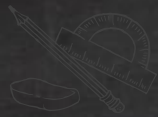
见习信息



学习和自己画出医院的网络结构拓扑图



见习信息



跟随老师一起去排除医院的一些网络故障



见习信息

```
stp mode rstp
stp bpdu-protection
stp global enable
#
interface Bridge-Aggregation1
description ***T0-DC-HJ1***
port link-type trunk
undo port trunk permit vlan 1
port trunk permit vlan 1101 2000 2004 2188 2195 2204 2404
link-aggregation mode dynamic
mad enable
undo stp enable
dhcp snooping trust
ipv6 dhcp snooping trust
#
interface NULL0
#
interface Vlan-interface2000
description ***MANAGEMENT-VLAN***
ip address 10.255.254.4 255.255.255.0
#
interface Vlan-interface2204
#
interface GigabitEthernet1/0/1
port link-mode bridge
port access vlan 2004
stp edged-port
dot1x
loopback-detection enable vlan 2004
loopback-detection action shutdown
```

自己配置全新的交换机



见习信息

和工程师一起现场换
下一组交换机



A large, stylized number '02' is centered in the upper half of the image. It is rendered in a white, serif font. The number is surrounded by several white geometric shapes: a large inverted triangle with a double-line border, a smaller inverted triangle below it, and several smaller triangles pointing outwards. The background is a dark, textured grey.

02

A white, hand-drawn style rectangular box with rounded corners and a slightly irregular border. It contains the Chinese characters '见习收获' in a simple, sans-serif font. The box is positioned at the bottom center of the image.

见习收获



见习收获

网络技术及其应用对经济与社会、自然与环境带来的影响

对于经济与社会，起到了促进作用
对于自然与环境，有利有弊



网络技术及其应用所涉及的法律与法规

信息安全。应制定相应的法律法规来保障网络信息的安全。
《中华人民共和国计算机信息系统安全保护条例》



见习收获



典型IT企业的组织架构、业务模式与管理规范

组织结构：管理层+骨干层+执行层

业务模式：产品免费，增值服务收费；产品收费服务二次收费

管理规范：规范性，强制性，科学性，相对稳定性

网络技术及其相关企业的国际性与开放性有所认识

相关企业应该互相加强合作，尤其是国际间的合作。同时，为了更好的发展，甚至可以将部分技术开放。比如：英特尔和高通。

“六域模型”参考架构国际标准

个人感想：

1. 作为一个网络工程师，在日常解决网络故障的时候，要懂得从易到难去排除原因。
2. 要会自主学习。不断学习新知识。
3. 换交换机是苦力活，不适合女生。



感谢各位聆听

Add up everything what you like and everything what you want

梦想，要比昨天走的更远